



KINETIC PUMP



KP-C Series

Close Coupled End Suction Centrifugal Pumps

Kinetic End Suction Centrifugal Pumps

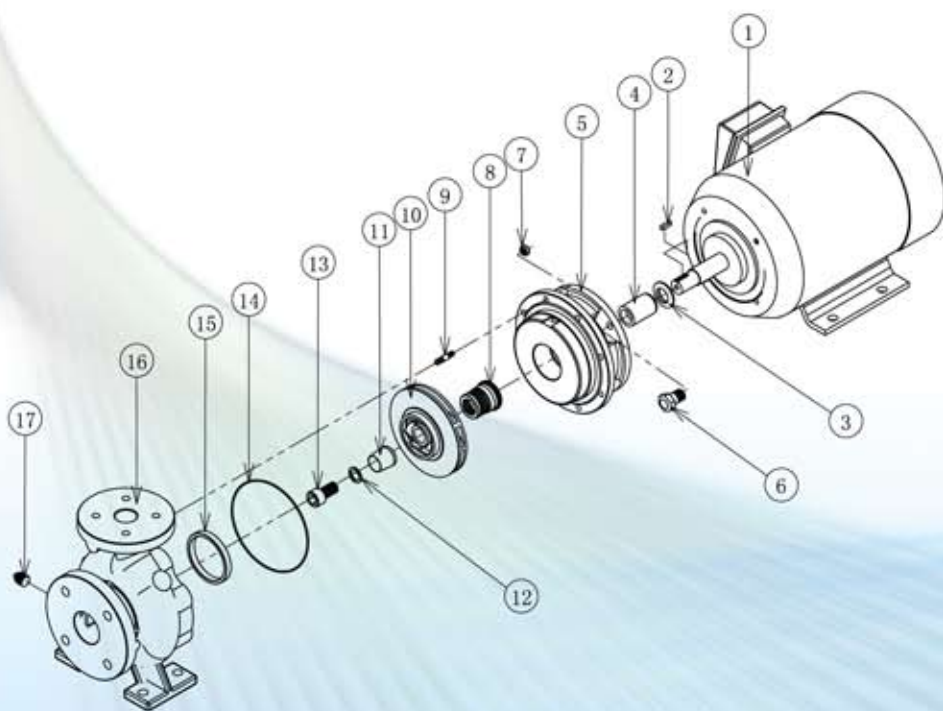
The KP-C series is a heavy-duty close-coupled end suction centrifugal pump designed for use in a variety of commercial and industrial applications. Standard motors are totally enclosed fan cooled (TEFC) with a 1.15 service factor, inverter rated, class F insulation, and IP 55 protection. Open drip-proof, explosion proof, and others are available upon request. A wide range of mechanical seals are available.

Markets

Aerospace
Building Trades
Chemical
General Industry
Marine
Mining and Aggregates

OEM
Power Generation
Petro-Chemical
Pulp and Paper
Semiconductor
Water and Wastewater

KP-C Close Coupled Pump Exploded View



1. JM Motor
2. Key shaft *
3. Slinger
4. Shaft sleeve *
5. Motor adaptor
6. Hex bolt
7. Hex nut
8. Mechanical seal *
9. Stud
10. Impeller
11. Impeller nut *
12. Spring washer *
13. Socket hex head bolt
14. Casing O-ring
15. Wear ring
16. Pump casing
17. Plug

* Part included in Replacement Seal Kit

Kinetic Pump Design Advantages

Heavy Construction

Large Operating Range

- Fewer models required
- Less inventory for wide product offering

Flanged Connections

- Easy pump removal without disrupting piping
- Fewer leaks in the field at pump connections

Cast with Feet Directly Under the Volute

- Ensures proper alignment can be maintained
- Provides pump support for installed piping
- Helps bearings and seals last longer

Gauge Connections on Suction and Discharge Ports

- Simplifies pressure gauge installation
- Enables troubleshooting of installed pumps

Back Pull Out Design

- Easy disassembly and servicing of pump
- Piping connections remain undisturbed

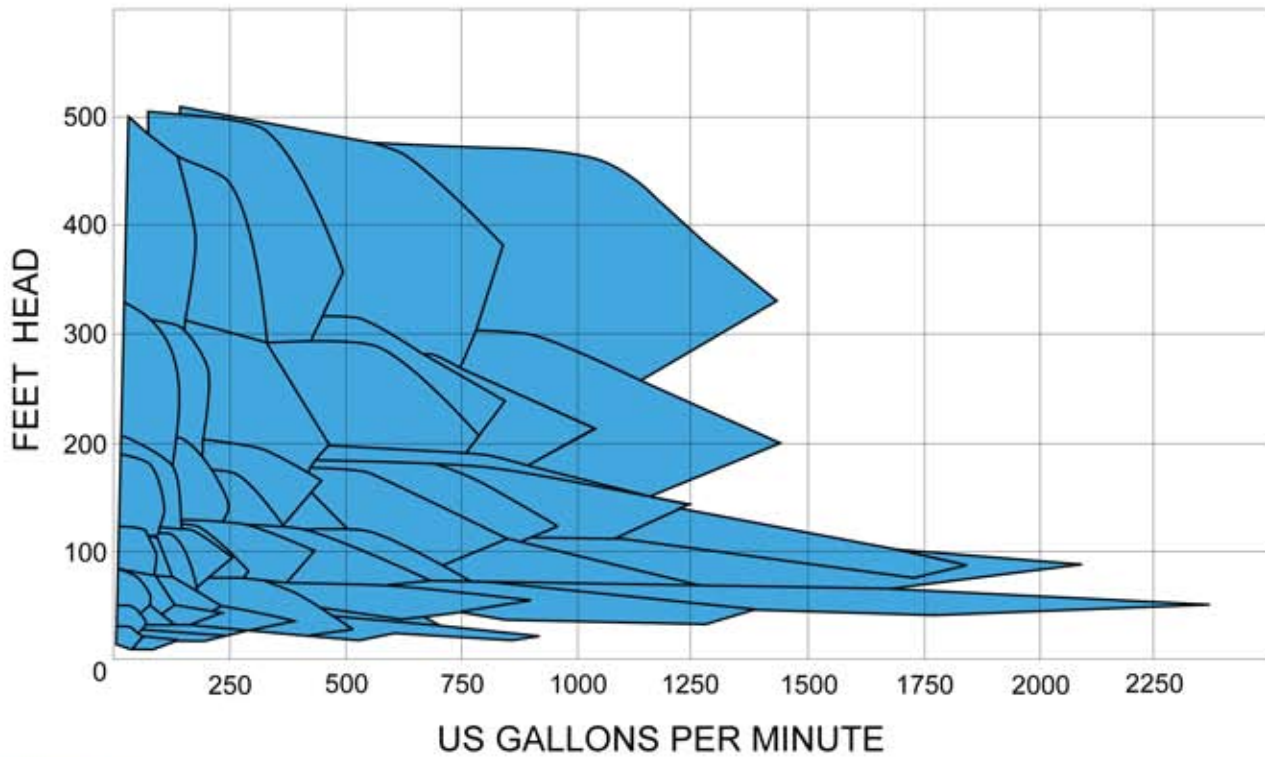
Center Line Suction and Discharge

Impellers Dynamically Balanced to ISO G6.3 Spec



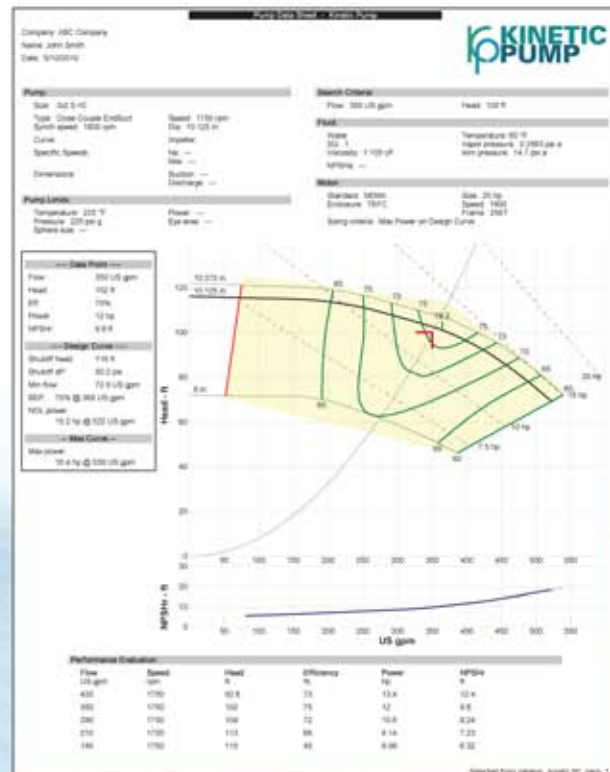
KP-F Series flexibly coupled end suction centrifugal pumps are also available.

Pump Range Chart

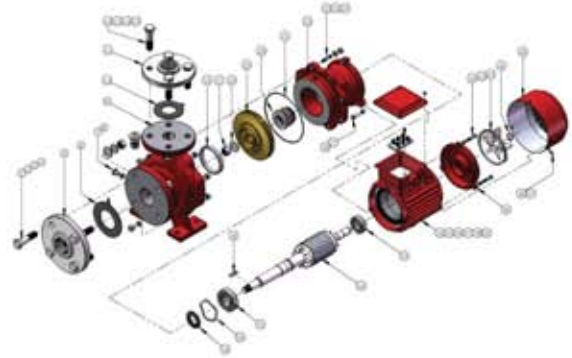


Selection Software

Kinetic pump model curves are generated by accurate test procedures and submitted to PUMP-FLO for analysis. Pumps can be selected and sized with full performance data via the Kinetic Pump website or by registering for a software CD for installation on your computer. The software provides curves for flow, pressure, brake horsepower, net positive suction head required (NPSHR), and efficiency. Pump speeds can be varied.



Engineering Drawings



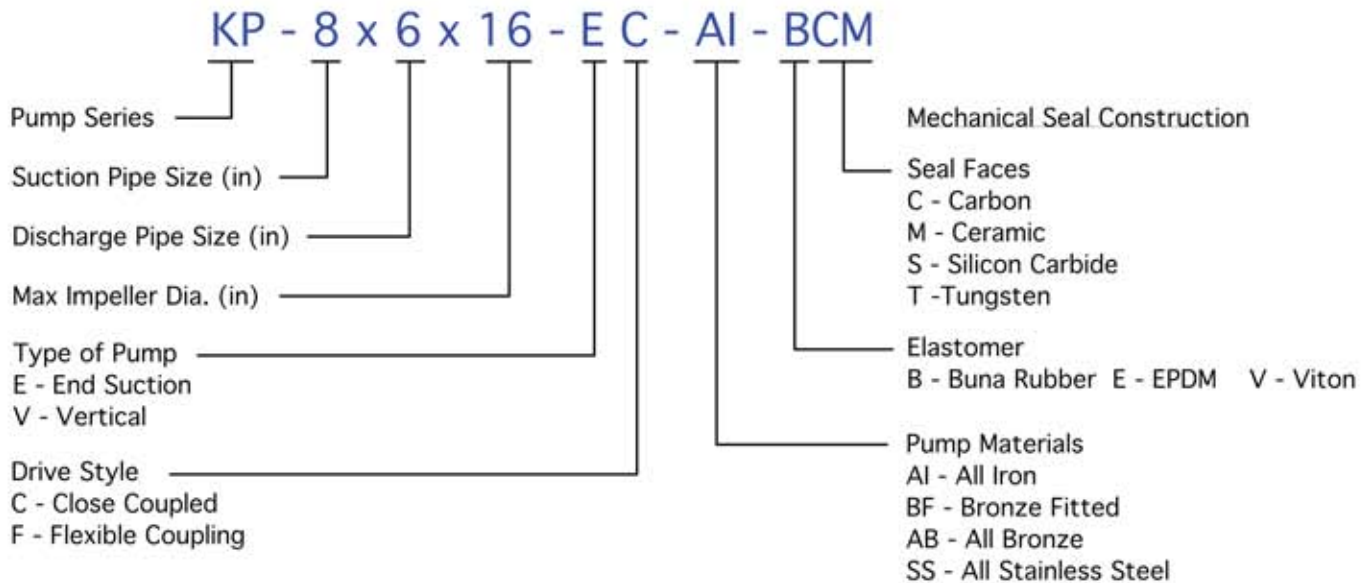
2D and 3D drawings are available for all Kinetic Pump models for OEM's and designers to incorporate into engineering projects. 2D drawings are available in DWG and DXF format. 3D models are available in SolidWorks and IGES format. All drawings can be downloaded from www.kineticpump.com.

Pump Testing

- 2750 Gallon Test Stand
- 1 1/2", 2", 4", and 6" Centrifugal Pump Test Loops
- PC Based Data Acquisition and Control Platform
- Computerized Data Collection and Analysis for Pressure, Flow Capacity and HP
- Complete Test Run Data is Logged and Stored in Memory for Subsequent Print Out and Graphing
- Certified Test Reports of the Actual Pump Performance Curve
- Customer May Witness the Testing Upon Request



Pump Model Nomenclature

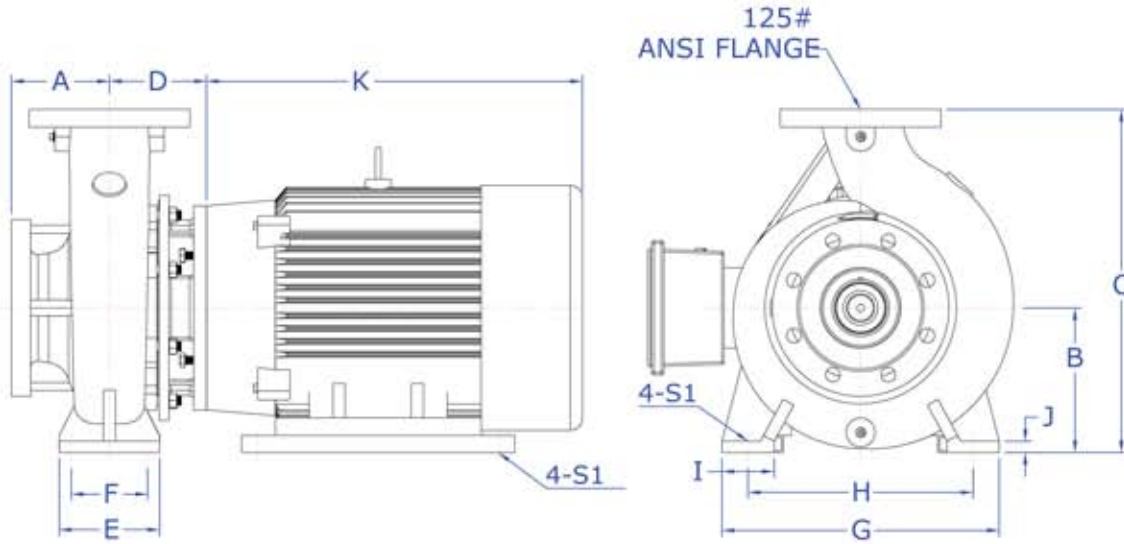


Materials of Construction

Part	All Iron	Bronze Fitted	All Bronze	All Stainless
Pump Casing	Iron	Iron	Bronze	304 or 316 SS
Impeller	Iron	Bronze	Bronze	304 or 316 SS
Shaft	416 SS	416 SS	416 SS	416 SS
Motor Adaptor	Iron	Iron	Bronze	304 or 316 SS
Mechanical Seal	Carbon/Ceramic Buna	Carbon/Ceramic Buna	Carbon/Ceramic Buna	Carbon/Ceramic Buna
Shaft Sleeve	304 SS	304 SS or Bronze	Bronze	304 or 316 SS
Wear Ring	Iron	Bronze	Bronze	304 or 316 SS
Hardware	Steel	Steel	Steel	Steel



Outline and Installation Dimensions (Inch)



Motor Frame	K (Max)
143	10.05
145	11.05
182	12.87
184	12.87
213	16.53
215	16.53
254	21.76
256	21.76
284	24.44
286	24.44
324	23.89
326	23.89

MODEL	PUMP CASING DIMENSIONS						PUMP FOOT DIMENSIONS						
	IN	OUT	A	B	C	D	E	F	G	H	I	J	ØS1
KP-2x1.25x5-EC	2	1.25	3.15	4.5	9.84	4.06	3.94	2.76	7.48	5.51	1.97	0.55	0.563
KP-2x1.25x7-EC	2	1.25	3.15	5.25	11.42	4.06	3.94	2.76	9.45	7.48	1.97	0.55	0.563
KP-2x1.25x8-EC	2	1.25	3.15	6.25	13.15	4.65	3.94	2.76	9.45	7.48	1.97	0.55	0.563
KP-2x1.25x10-EC	2	1.25	3.94	7	15.67	4.57	4.92	3.74	12.6	9.84	2.56	0.55	0.563
KP-2.5x1.5x5-EC	2.5	1.5	3.15	4.5	9.92	4.06	3.94	2.76	8.27	6.3	1.97	0.55	0.563
KP-2.5x1.5x7-EC	2.5	1.5	3.15	5.25	11.42	4.06	3.94	2.76	9.45	7.48	1.97	0.55	0.563
KP-2.5x1.5x8-EC	2.5	1.5	3.94	6.25	13.23	4.61	3.94	2.76	10.4	8.35	1.97	0.55	0.563
KP-2.5x1.5x10-EC	2.5	1.5	3.94	7	15.75	4.65	4.92	3.74	12.6	9.84	2.56	0.55	0.563
KP-2.5x1.5x13-EC	2.5	1.5	4.92	8	17.72	4.52	4.92	3.74	13.6	11	2.56	0.55	0.563
KP-2.5x2x5-EC	2.5	2	3.94	5.25	11.42	4.65	3.94	2.76	9.45	7.48	1.97	0.55	0.563
KP-2.5x2x7-EC	2.5	2	3.94	6.25	13.23	4.65	3.94	2.76	10.4	8.35	1.97	0.55	0.563
KP-2.5x2x8-EC	2.5	2	3.94	6.25	14.02	4.65	3.94	2.76	10.4	8.35	1.97	0.55	0.563
KP-2.5x2x10-EC	2.5	2	3.94	7.09	15.84	4.57	4.92	3.74	12.6	9.84	2.56	0.55	0.563
KP-2.5x2x13-EC	2.5	2	4.92	9	19.9	4.52	4.92	3.74	13.6	11	2.56	0.63	0.563
KP-3x2.5x5-EC	3	2.5	3.94	6.3	14.18	4.84	4.92	3.74	11	8.35	2.56	0.55	0.563
KP-3x2.5x7-EC	3	2.5	3.94	6.3	14.18	4.92	4.92	3.74	11	8.35	2.56	0.55	0.563
KP-3x2.5x8-EC	3	2.5	3.94	7	15.87	4.72	4.92	3.74	12.6	9.84	2.56	0.55	0.563
KP-3x2.5x10-EC	3	2.5	3.94	7.87	17.7	4.48	6.3	4.72	14.2	11	3.15	0.63	0.752
KP-3x2.5x13-EC	3	2.5	4.92	9	20.02	4.32	6.3	4.72	15.7	12.4	3.15	0.63	0.752
KP-4x3x7-EC	4	3	4.92	7.09	15.92	4.96	4.92	3.74	12.6	9.84	2.56	0.55	0.563
KP-4x3x8-EC	4	3	4.92	7.09	16.9	4.52	4.92	3.74	13.6	11	2.56	0.55	0.563
KP-4x3x10-EC	4	3	4.92	7.87	18.85	4.52	6.3	4.72	15.7	12.4	3.15	0.63	0.752
KP-4x3x13-EC	4	3	4.92	9.84	22.2	4.52	6.3	4.72	15.7	12.4	3.15	0.63	0.752
KP-5x4x8-EC	5	4	4.92	7.87	18.77	4.52	6.3	4.72	14.2	11	3.15	0.63	0.752
KP-5x4x10-EC	5	4	5.51	8.86	19.74	4.52	6.3	4.72	15.7	12.4	3.15	0.63	0.752
KP-5x4x13-EC	5	4	5.51	9.84	22.12	4.52	6.3	4.72	15.7	12.4	3.15	0.63	0.752
KP-6x5x8-EC	6	5	5.51	9.84	22.04	4.52	6.3	4.72	15.7	12.4	3.15	0.63	0.752
KP-6x5x10-EC	6	5	5.51	9.84	23.62	4.52	6.3	4.72	15.7	12.4	3.15	0.63	0.752
KP-8x6x13-EC	8	6	6.3	11	24.76	4.52	7.87	5.91	21.7	17.7	3.94	0.79	0.874

Dimensions subject to change. Consult factory for certified dimensions.

**Also Available:
KP-ST Series
Self Priming Trash Pumps**



CONTACT YOUR LOCAL DISTRIBUTOR:



**KINETIC
PUMP**

**Kinetic Pump Company
P.O. Box 125
Lake Orion, Mi 48361 USA**

248-628-7000 www.kineticpump.com